



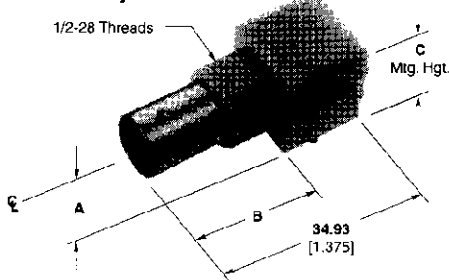
RF Coax Connectors (Continued)

BNC Connectors, 75 Ohm for T3/E3 Applications (Continued)

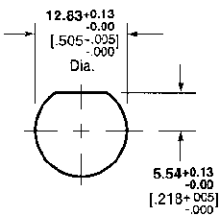
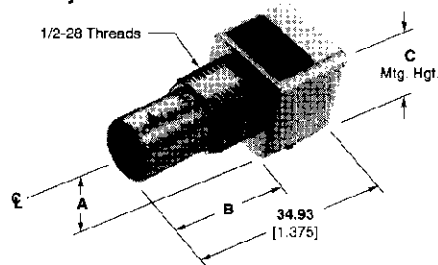
Right Angle PC Board/Panel Mount Jacks

Outer Shell — Nickel
Dielectric — Polymethylpentene
Contact — See Charts
Lockwasher and Jam Nut see page 573.

VALOX Body

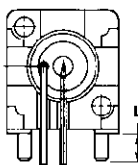


Metal Body



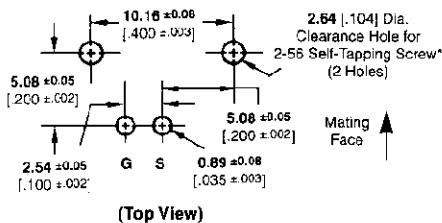
Maximum Panel Thickness 6.1 [.240]

Recommended Panel Cutout

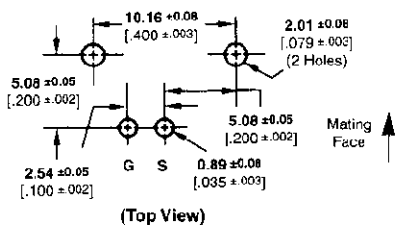


Recommended PC Board Layouts

Without Mounting Posts



With Mounting Posts



* Screw for panel thickness of 2.38 [3/32] or greater
Part No. 221108-2.
Screw for panel thickness of less than 2.38 [3/32]
Part No. 221108-4.

Body Material	Center Contact Plating	Dimensions				Part Number
		A	B	C	L	
VALOX, White	Gold1	6.91 .272	21.08 .830	13.18 .519	3.48 .137	413194-1
VALOX, Black	Gold1	6.91 .272	21.08 .830	13.88 .519	3.48 .137	413194-2
VALOX ¹ , Black (Economy)	Gold1	6.91 .272	21.21 .835	13.88 .519	3.48 .137	415634-1
	Gold1	8.59 .338	21.21 .835	15.88 .625	3.48 .137	415633-1
VALOX, White	Gold2	8.59 .338	21.21 .835	15.88 .625	3.48 .137	414459-1
Metal	Gold1	8.25 .325	20.83 .820	15.88 .625	2.16 .085	222092-1
	Gold1	8.25 .325	20.83 .820	15.88 .625	—	222093-1 ¹
Metal ² (Economy)	Gold1	8.25 .325	20.83 .820	15.88 .625	3.48 .137	414409-1
	Gold1	8.25 .325	20.83 .820	15.88 .625	—	414410-1
Metal with Compliant Posts	Gold1	6.91 .272	20.83 .820	12.70 .500	3.48 .137	415417-1
	Tin-Lead	8.56 .337	21.21 .835	15.88 .625	3.48 .137	415419-1
Metal	Silver	8.25 .325	20.83 .820	15.88 .625	2.16 .085	222092-2
Metal	Gold1	8.25 .325	20.83 .820	15.88 .625	3.48 .137	222092-3
Metal	Silver	8.25 .325	20.83 .820	15.88 .625	—	222093-2 ¹
Metal	Gold1	6.91 .272	20.83 .820	12.70 .500	3.48 .137	414907-1
Metal ² (Economy)	Gold1	6.91 .272	20.83 .820	12.70 .500	—	1274072-1 ¹
Metal ^{2,3} (Economy) High Temp	Gold1	6.91 .272	20.83 .820	12.70 .500	3.48 .137	1274084-2
Metal ² (Economy)	Gold1	6.91 .272	20.83 .820	12.70 .500	3.48 .137	1274084-1

Plating:

Gold1 — 0.00076 [.000030] thick.
Gold2 — 0.00127 [.000050] thick.

¹ Without mounting posts.

² Stamped and formed contact, Phosphor Bronze contact material.

³ IR Reflow Compatible.

Note: If an Insulating Bushing is required see part number 330620.